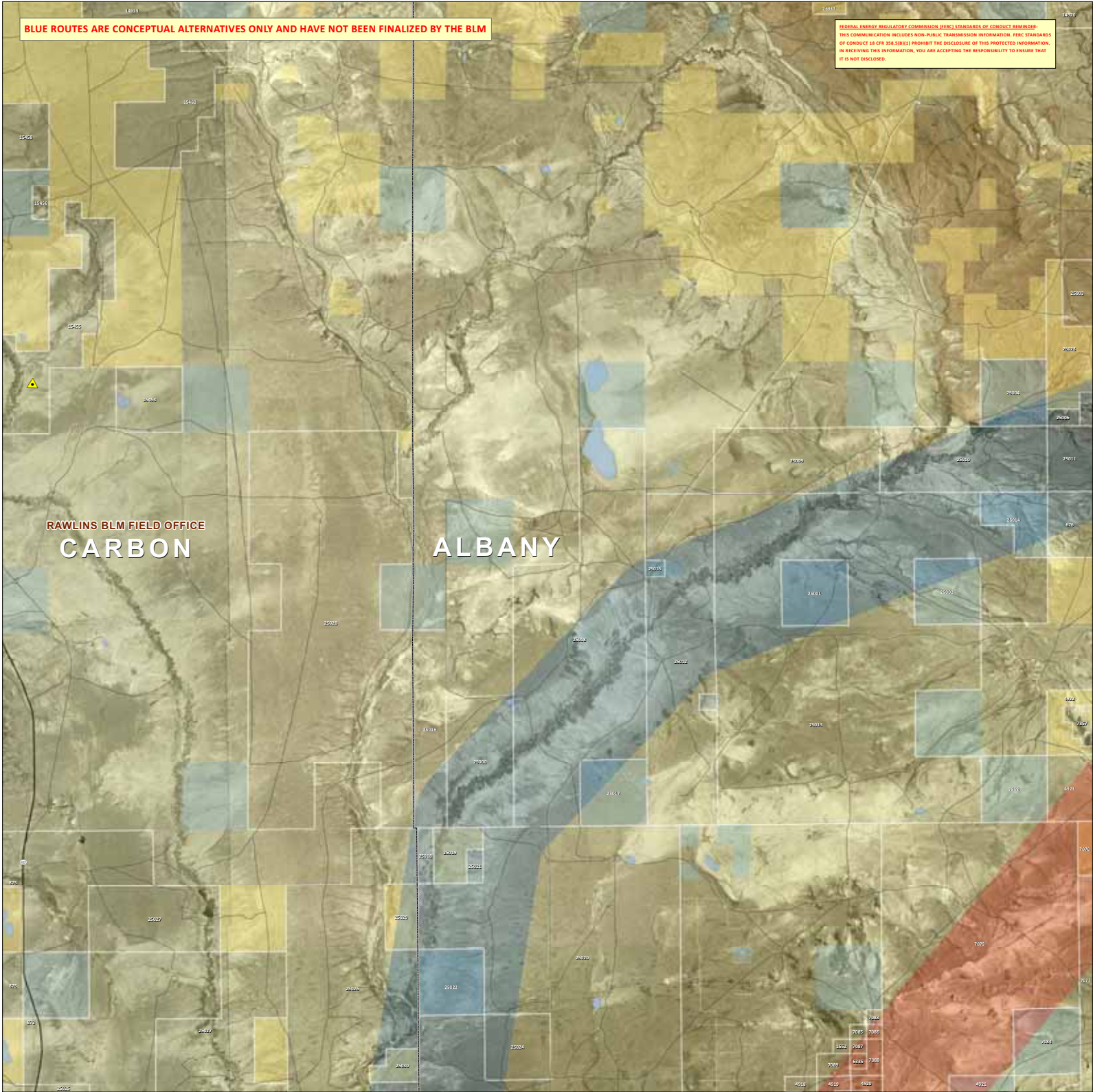


BLUE ROUTES ARE CONCEPTUAL ALTERNATIVES ONLY AND HAVE NOT BEEN FINALIZED BY THE BLM

FEDERAL ENERGY REGULATORY COMMISSION (FERC) STANDARDS OF CONDUCT REMINDER:  
 THIS COMMUNICATION INCLUDES NON-PUBLIC TRANSMISSION INFORMATION. FERC STANDARDS  
 OF CONDUCT 18 CFR 38.101(e) PROHIBIT THE DISCLOSURE OF THIS PROTECTED INFORMATION.  
 IN RECEIVING THIS INFORMATION, YOU ARE ACCEPTING THE RESPONSIBILITY TO ENSURE THAT  
 IT IS NOT DISCLOSED.



RAWLINS BLM FIELD OFFICE  
**CARBON**

**ALBANY**

**GATEWAY WEST TRANSMISSION LINE PROJECT**  
 IDAHO / WYOMING

**ROUTE DETAIL**  
 MAP 09 OF 81

- |  |  |  |
|--|--|--|
| <p><b>Project Features</b></p> <ul style="list-style-type: none"> <li><span style="color: red;">■</span> Project Route Corridor</li> <li><span style="color: blue;">■</span> Feasible Alternative Corridor</li> <li><span style="color: green;">■</span> Alternative Under Consideration</li> <li><span style="color: yellow;">■</span> Transmission Tower Footprint Location</li> <li><span style="color: purple;">■</span> West Wind Energy Corridor</li> <li><span style="color: orange;">■</span> Storage Member</li> </ul> <p><b>Other Features</b></p> <ul style="list-style-type: none"> <li><span style="color: blue;">—</span> Interstate Highway</li> <li><span style="color: red;">—</span> US and State Highways</li> <li><span style="color: black;">—</span> State and County Roads</li> <li><span style="color: black;">—</span> Railroads</li> <li><span style="color: black;">—</span> Existing Transmission Lines</li> </ul> | <p><b>Administrative Features</b></p> <ul style="list-style-type: none"> <li><span style="color: blue;">■</span> BLM Field Office</li> <li><span style="color: yellow;">■</span> US Forest Service District</li> <li><span style="color: green;">■</span> County Limits</li> <li><span style="color: orange;">■</span> City Limits</li> <li><span style="color: red;">■</span> Proposed City Incorporation Area</li> <li><span style="color: purple;">■</span> Planning or Review Corridor (PR/RC)</li> <li><span style="color: blue;">■</span> Existing or Proposed Subdivisions</li> <li><span style="color: green;">■</span> Mining Network Status Area (MSA) of Prop. NCA</li> <li><span style="color: red;">■</span> Military Operations Areas (MOA) (ACCESS)</li> <li><span style="color: orange;">■</span> Clusters of the West MS Administration Area</li> </ul> | <p><b>Ownership</b></p> <ul style="list-style-type: none"> <li><span style="color: yellow;">■</span> Bureau of Land Management (BLM)</li> <li><span style="color: orange;">■</span> US Forest Service (USFS)</li> <li><span style="color: green;">■</span> National Park Service (NPS)</li> <li><span style="color: red;">■</span> US Fish and Wildlife National Wildlife Refuge</li> <li><span style="color: blue;">■</span> Bureau of Reclamation (BOR)</li> <li><span style="color: purple;">■</span> Indian Reservation</li> <li><span style="color: orange;">■</span> Department of Defense</li> <li><span style="color: green;">■</span> Other Federal</li> <li><span style="color: red;">■</span> State and Local</li> <li><span style="color: blue;">■</span> Private</li> </ul> |
|--|--|--|

Scale: 0 0.5 1 Miles

Projection: North American NAD 83 UTM Zone 18N  
 Units: Meter  
 Datum: North American Datum 1983  
 Spheroid: GRS 1980  
 Datum Shift: 1181.000 Easting, 1831.000 Northing, 1181.000 Easting, 1831.000 Northing  
 Units: Meter  
 Datum: North American Datum 1983  
 Spheroid: GRS 1980  
 Datum Shift: 1181.000 Easting, 1831.000 Northing, 1181.000 Easting, 1831.000 Northing  
 Units: Meter

