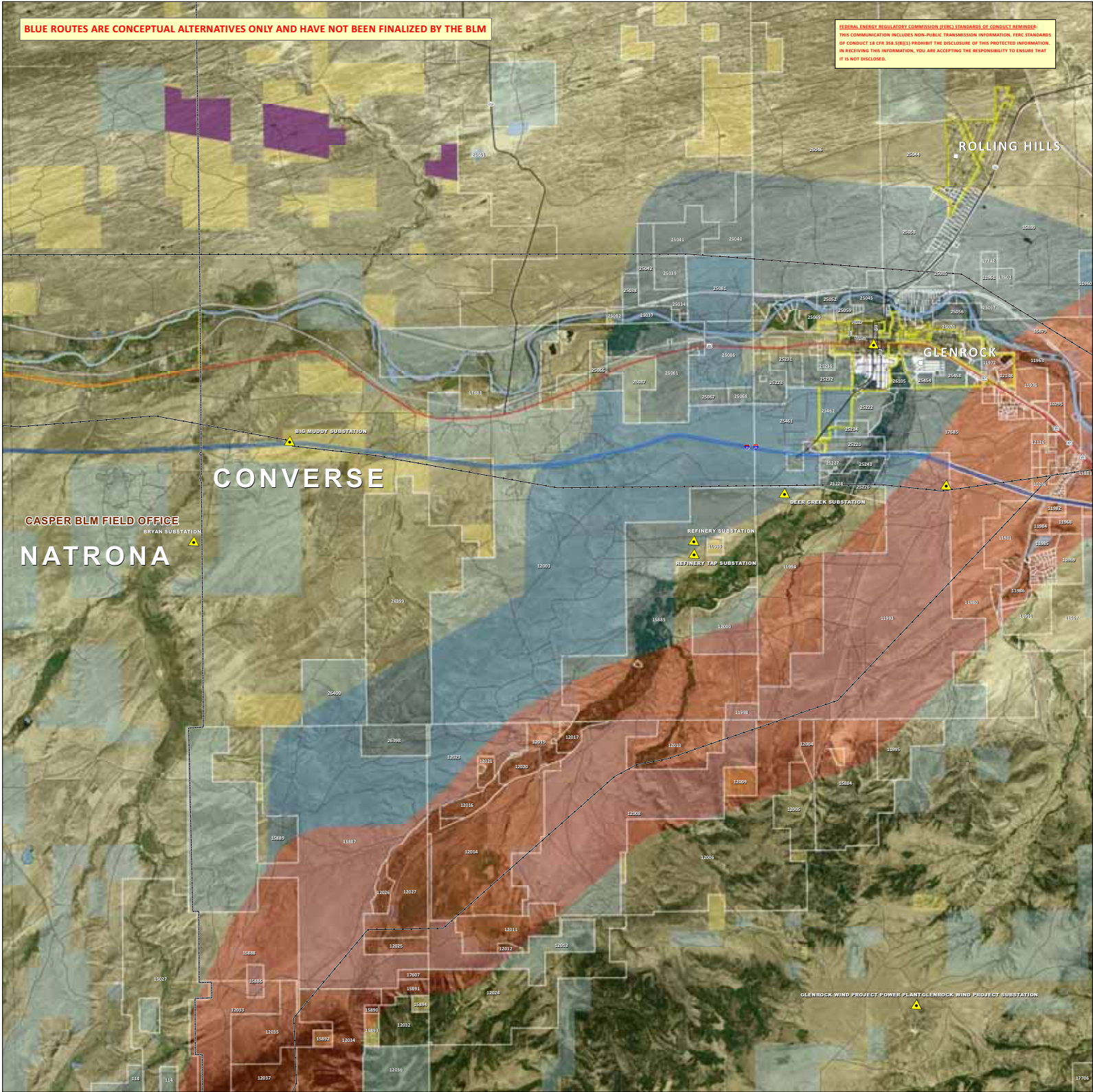


BLUE ROUTES ARE CONCEPTUAL ALTERNATIVES ONLY AND HAVE NOT BEEN FINALIZED BY THE BLM

FEDERAL ENERGY REGULATORY COMMISSION (FERC) STANDARDS OF CONDUCT REMINDER:
 THIS COMMUNICATION INCLUDES NON-PUBLIC TRANSMISSION INFORMATION. FERC STANDARDS
 OF CONDUCT 18 CFR 38.150(e) PROHIBIT THE DISCLOSURE OF THIS PROTECTED INFORMATION.
 IN RECEIVING THIS INFORMATION, YOU ARE ACCEPTING THE RESPONSIBILITY TO ENSURE THAT
 IT IS NOT DISCLOSED.



GATEWAY WEST TRANSMISSION LINE PROJECT
 IDAHO / WYOMING
ROUTE DETAIL
 MAP 02 OF 81

- | | | |
|---|--|--|
| <p>Project Features</p> <ul style="list-style-type: none"> ■ Proposed Route Corridor ■ Feasible Alternative Corridor ■ Alternative Under Consideration ■ Transportation Plan Location ■ Wind Energy Center ■ Storage Member <p>Other Features</p> <ul style="list-style-type: none"> — Interstate Highway — US and State Highways — State and County Roads — Railroads — Existing Transmission Lines | <p>Administrative Features</p> <ul style="list-style-type: none"> ■ BLM Field Office ■ US Forest Service District ■ County Limits ■ City Limits ■ Proposed City Incorporation Area ■ Planning or Review Corridor (P/R Corridor) ■ Existing or Proposed Subdivisions ■ Mining National System Road Right-of-Way (MNSRW) ■ Military Operations Areas (MILITARY AREAS) ■ Centers of the Most 100 Administration Area | <p>Ownership</p> <ul style="list-style-type: none"> ■ Bureau of Land Management (BLM) ■ US Forest Service (USFS) ■ National Park Service (NPS) ■ US Fish and Wildlife National Wildlife Refuge ■ Bureau of Reclamation (BOR) ■ Indian Reservation ■ Department of Defense ■ Other Federal ■ State and Local ■ State and Local Parks & Utilities ■ Private |
|---|--|--|

