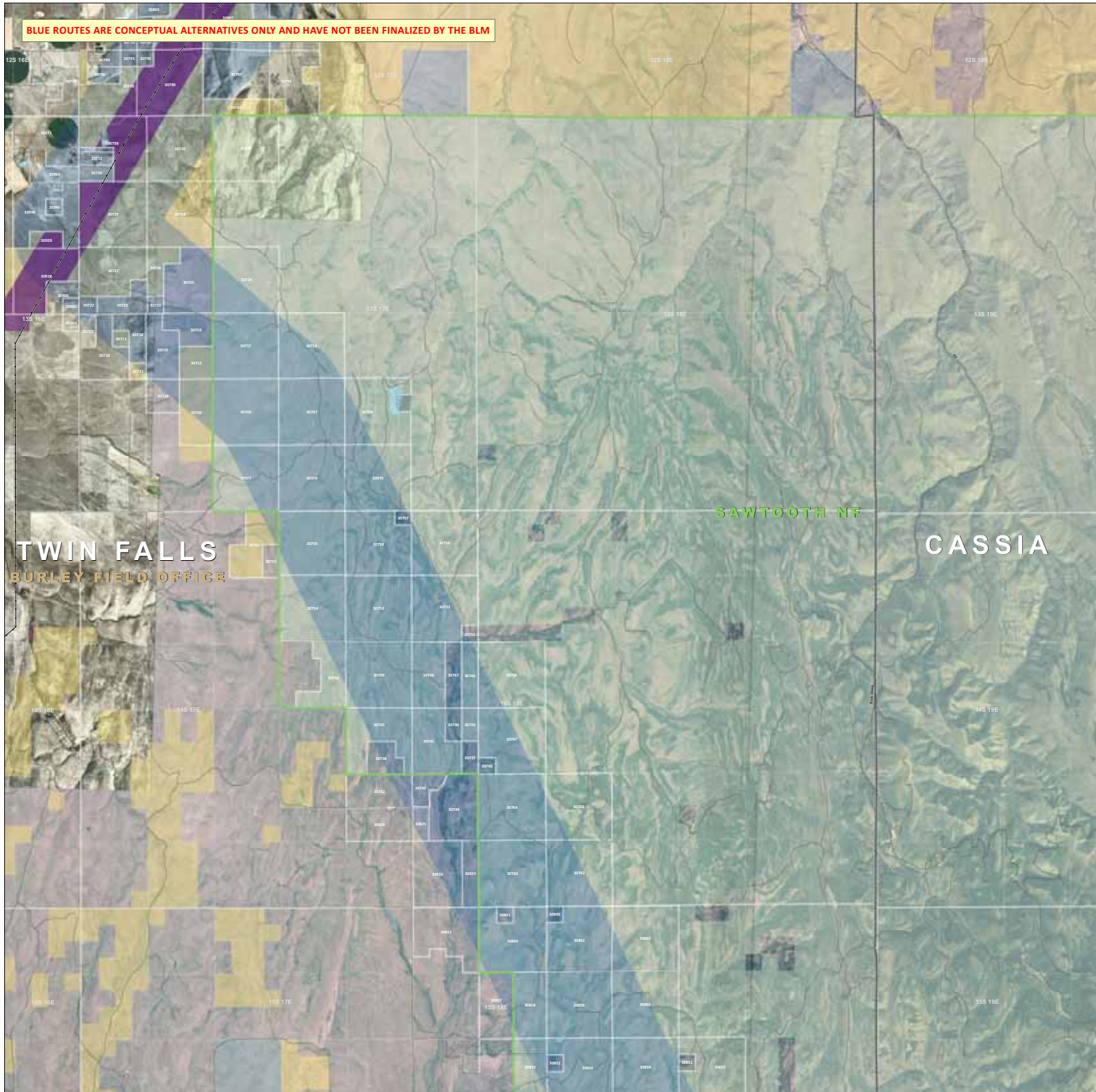


BLUE ROUTES ARE CONCEPTUAL ALTERNATIVES ONLY AND HAVE NOT BEEN FINALIZED BY THE BLM



GATEWAY WEST TRANSMISSION LINE PROJECT
IDAHO / WYOMING

ROUTE DETAIL

MAP 75 OF 84

| | | |
|--|---|---|
| <p>Project Features</p> <ul style="list-style-type: none"> Proposed Route Corridor Feasible Alternative Corridor Alternative Under Consideration Transmission Tower Footprint Location West Wind Energy Corridor Storage Marker <p>Other Features</p> <ul style="list-style-type: none"> Interstate Highway US and State Highways State and County Roads Railroads Existing Transmission Lines | <p>Administrative Features</p> <ul style="list-style-type: none"> BLM Field Office US Forest Service District County Limits City Limits Proposed City Incorporation Area Planning or Review Corridor (PR/RC) Existing or Proposed Subdivisions Mining National System Road State of Prop. NCA Military Operations Areas (MILITARY AREAS) Centers of the Most 100 Administration Area | <p>Ownership</p> <ul style="list-style-type: none"> Bureau of Land Management (BLM) US Forest Service (USFS) National Park Service (NPS) US Fish and Wildlife National Wildlife Refuge Bureau of Reclamation (BOR) Indian Reservations Department of Defense Other Federal State & Local Private |
|--|---|---|

0 0.5 1
Miles

PROJECT AREA

MAP INDEX

©2023 Rocky Mountain Power. All rights reserved. This map is a conceptual representation of the project and does not constitute an offer of any financial product or service. For more information, please contact your local BLM office.