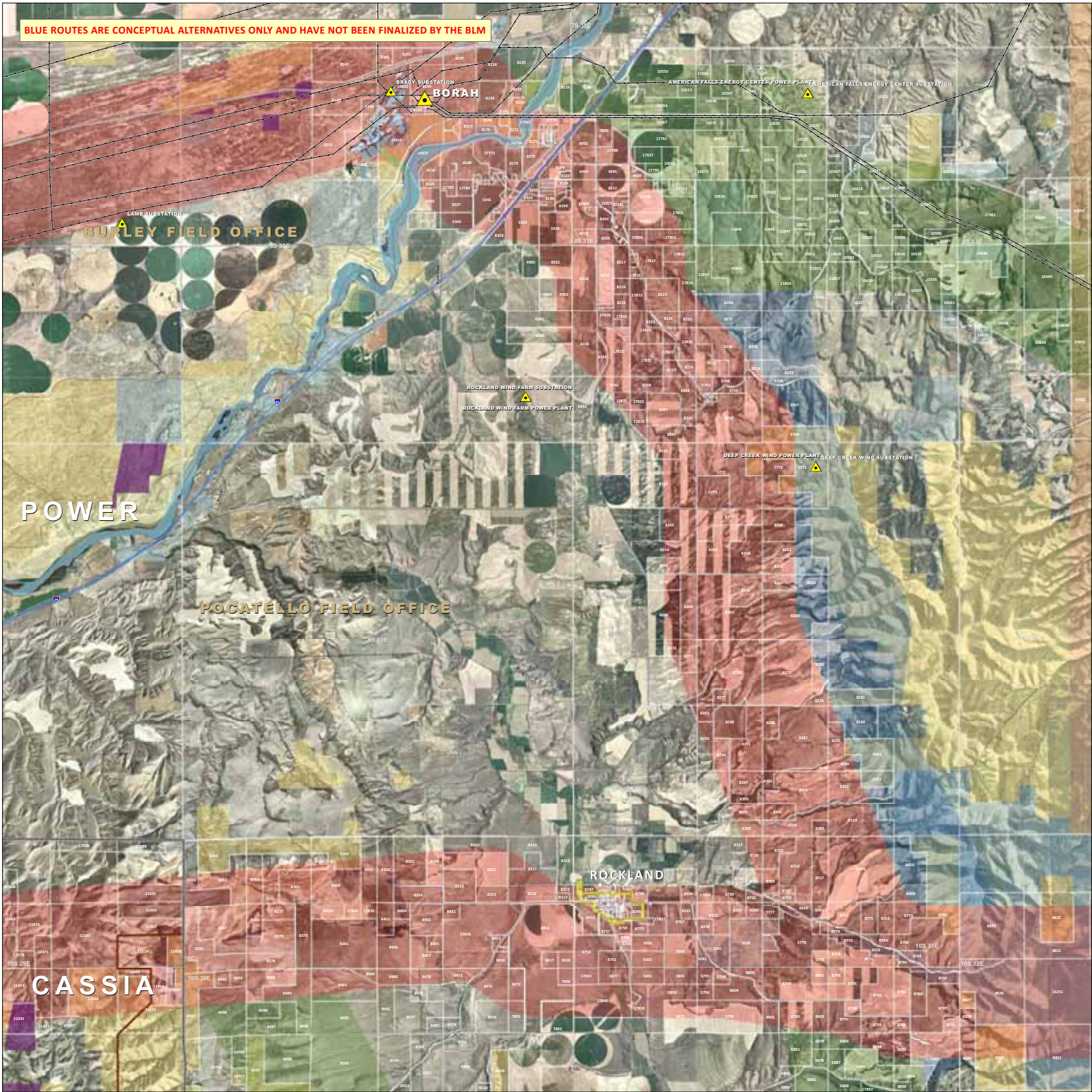


BLUE ROUTES ARE CONCEPTUAL ALTERNATIVES ONLY AND HAVE NOT BEEN FINALIZED BY THE BLM



**ROUTE DETAIL**  
MAP 32 OF 84



- |   |  |  |
|---|--|--|
| <p><b>Project Features</b></p> <ul style="list-style-type: none"> <li><span style="color: red;">■</span> Project Area Contour</li> <li><span style="color: green;">■</span> Feasible Alternative Contour</li> <li><span style="color: blue;">■</span> Alternative Under Consideration</li> <li><span style="color: yellow;">■</span> Transmission Plant Location</li> <li><span style="color: purple;">■</span> Wind Energy Center</li> <li><span style="color: orange;">■</span> Storage Member</li> </ul> <p><b>Other Features</b></p> <ul style="list-style-type: none"> <li><span style="color: blue;">—</span> Interstate Highway</li> <li><span style="color: red;">—</span> US and State Highways</li> <li><span style="color: black;">—</span> State and County Roads</li> <li><span style="color: grey;">—</span> Railroads</li> <li><span style="color: black;">—</span> Existing Transmission Lines</li> </ul> | <p><b>Administrative Features</b></p> <ul style="list-style-type: none"> <li><span style="color: black;">—</span> BLM Field Office</li> <li><span style="color: green;">—</span> US Forest Service District</li> <li><span style="color: blue;">—</span> County Limits</li> <li><span style="color: yellow;">—</span> City Limits</li> <li><span style="color: orange;">—</span> Proposed City Incorporation Area</li> <li><span style="color: purple;">—</span> Planning or Action Center (PAC) boundary</li> <li><span style="color: red;">—</span> Existing or Proposed Subdivisions</li> <li><span style="color: grey;">—</span> Mining National System Mine Sites of Prop. NCA</li> <li><span style="color: black;">—</span> Military Operations Areas (MILITARY AREAS)</li> <li><span style="color: black;">—</span> Clusters of the BLM's National Administration Area</li> </ul> | <p><b>Ownership</b></p> <ul style="list-style-type: none"> <li><span style="color: green;">—</span> Bureau of Land Management (BLM)</li> <li><span style="color: blue;">—</span> US Forest Service (USFS)</li> <li><span style="color: yellow;">—</span> National Park Service (NPS)</li> <li><span style="color: orange;">—</span> US Fish and Wildlife National Wildlife Refuge</li> <li><span style="color: red;">—</span> Bureau of Reclamation (BOR)</li> <li><span style="color: purple;">—</span> Indian Reservations</li> <li><span style="color: grey;">—</span> Department of Defense</li> <li><span style="color: black;">—</span> Other Federal</li> <li><span style="color: black;">—</span> State &amp; Local</li> <li><span style="color: black;">—</span> Private</li> </ul> |
|---|--|--|

