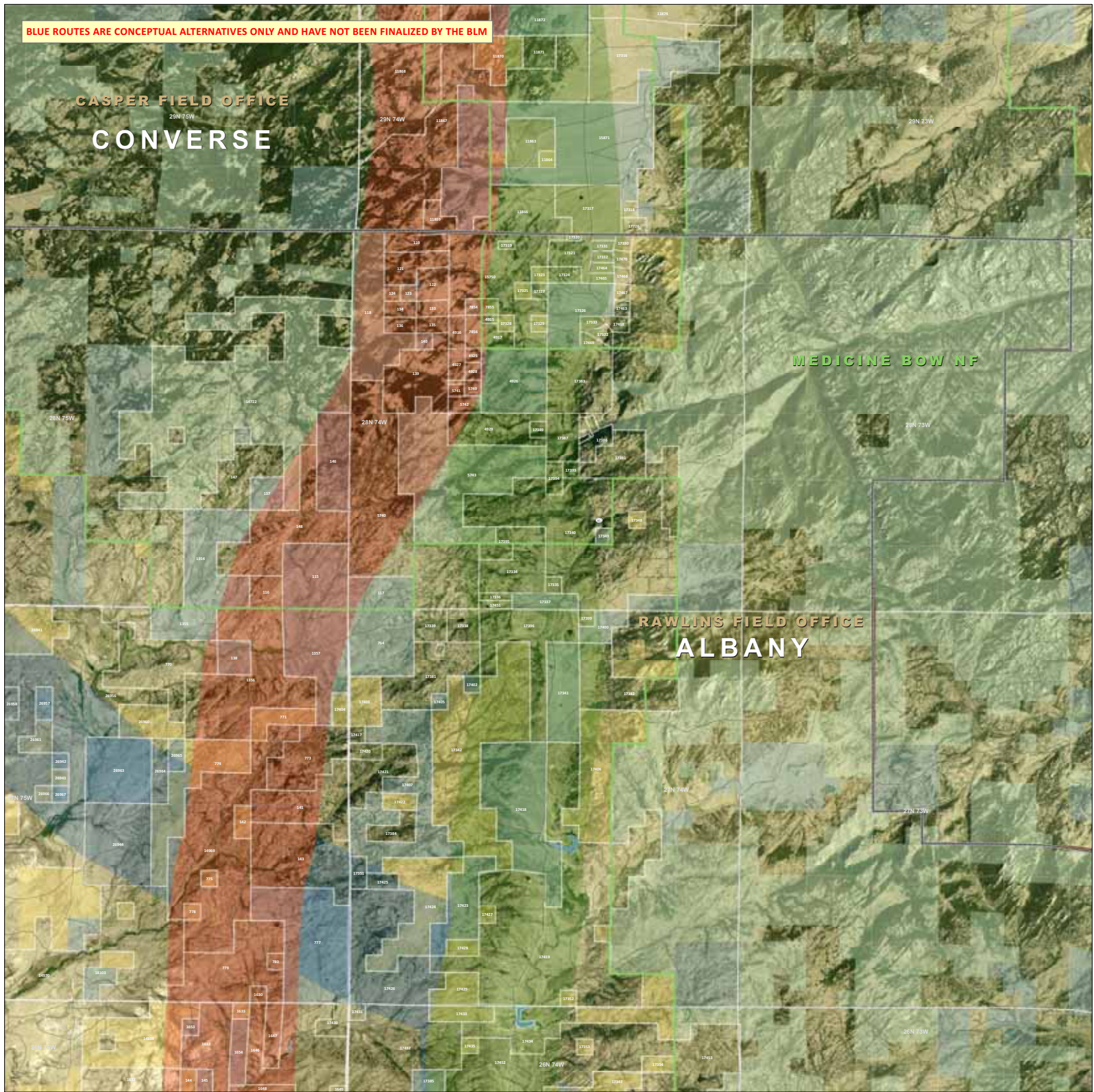


BLUE ROUTES ARE CONCEPTUAL ALTERNATIVES ONLY AND HAVE NOT BEEN FINALIZED BY THE BLM

CASPER FIELD OFFICE  
CONVERSE

MEDICINE BOW NF

RAWLINS FIELD OFFICE  
ALBANY



**GATEWAY WEST TRANSMISSION LINE PROJECT**  
IDAHO / WYOMING

**ROUTE DETAIL**  
MAP 03 OF 84

**Project Features**

- Proposed Route Corridor
- Feasible Alternative Corridor
- Alternative Under Consideration
- Transmission Plant Location
- West Wind Energy Center
- Storage Marker

**Other Features**

- Interstate Highway
- US and State Highways
- State and County Roads
- Railroads
- Existing Transmission Lines

**Administrative Features**

- BLM Field Office
- US Forest Service District
- County Limits
- City Limits
- Proposed City Annexation Area
- Planning or Review Corridor (P/R Corridor)
- Existing or Proposed Subdivisions
- Inventory Network Status Area (INSA)
- Wildlife Operations Area (WOA)
- Centers of the BLM 100 Administration Area

**Ownership**

- Bureau of Land Management (BLM)
- US Forest Service (USFS)
- National Park Service (NPS)
- US Fish and Wildlife National Wildlife Refuge
- Bureau of Reclamation (BOR)
- Indian Reservations
- Department of Defense
- Other Federal
- State and Local
- State and Local Parks & Utilities
- Private

**PROJECT AREA**

Scale: 0 0.5 1 Miles

North Arrow

**MAP INDEX**

Scale: 0 20 40 Miles

Rocky Mountain Power and BLM logos. Project: Gateway West 400 kV AC Line. Revision: 03/2024. Date: 03/20/24. Scale: 1:50,000. Contour Interval: 20 Feet. Elevation: 1000 Feet. Projection: NAD 83. Zone: 12N. Units: Feet. Source: Aerial Imagery, BLM, USFS, NPS, BOR, DOI, USGS, ESRI, etc.